

US 192: A Different Take on BRT

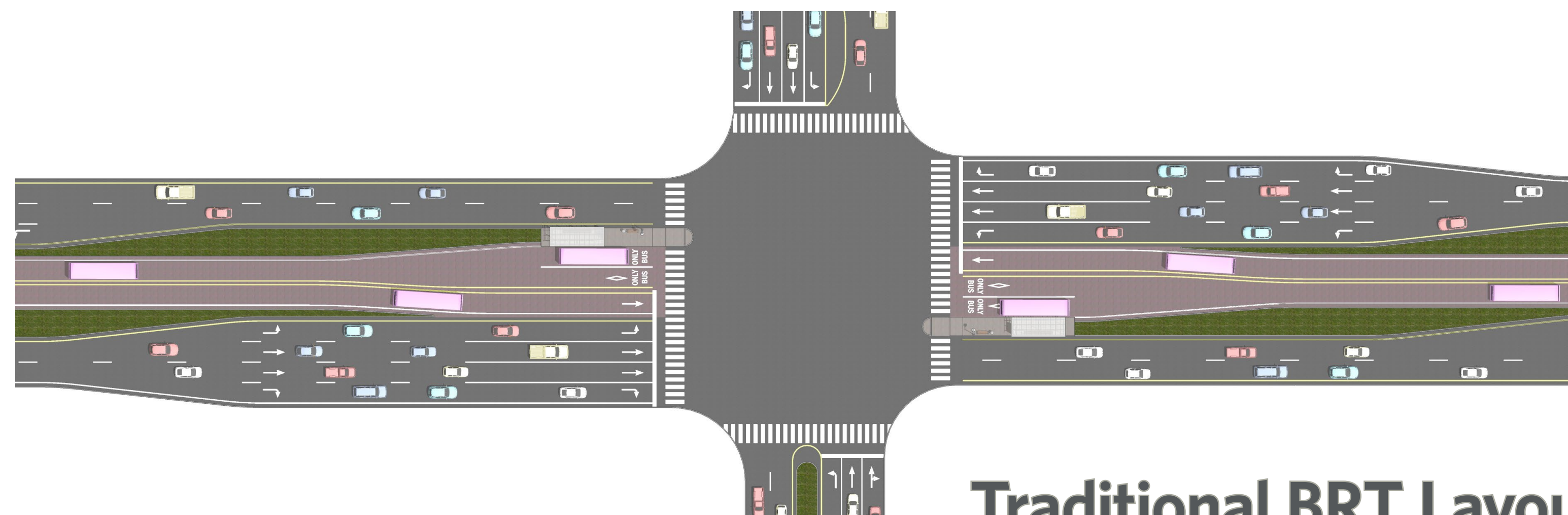
Smith Siromaskul, P.E. – HDR

Jeremy Dilmore, P.E. – Florida Department of Transportation

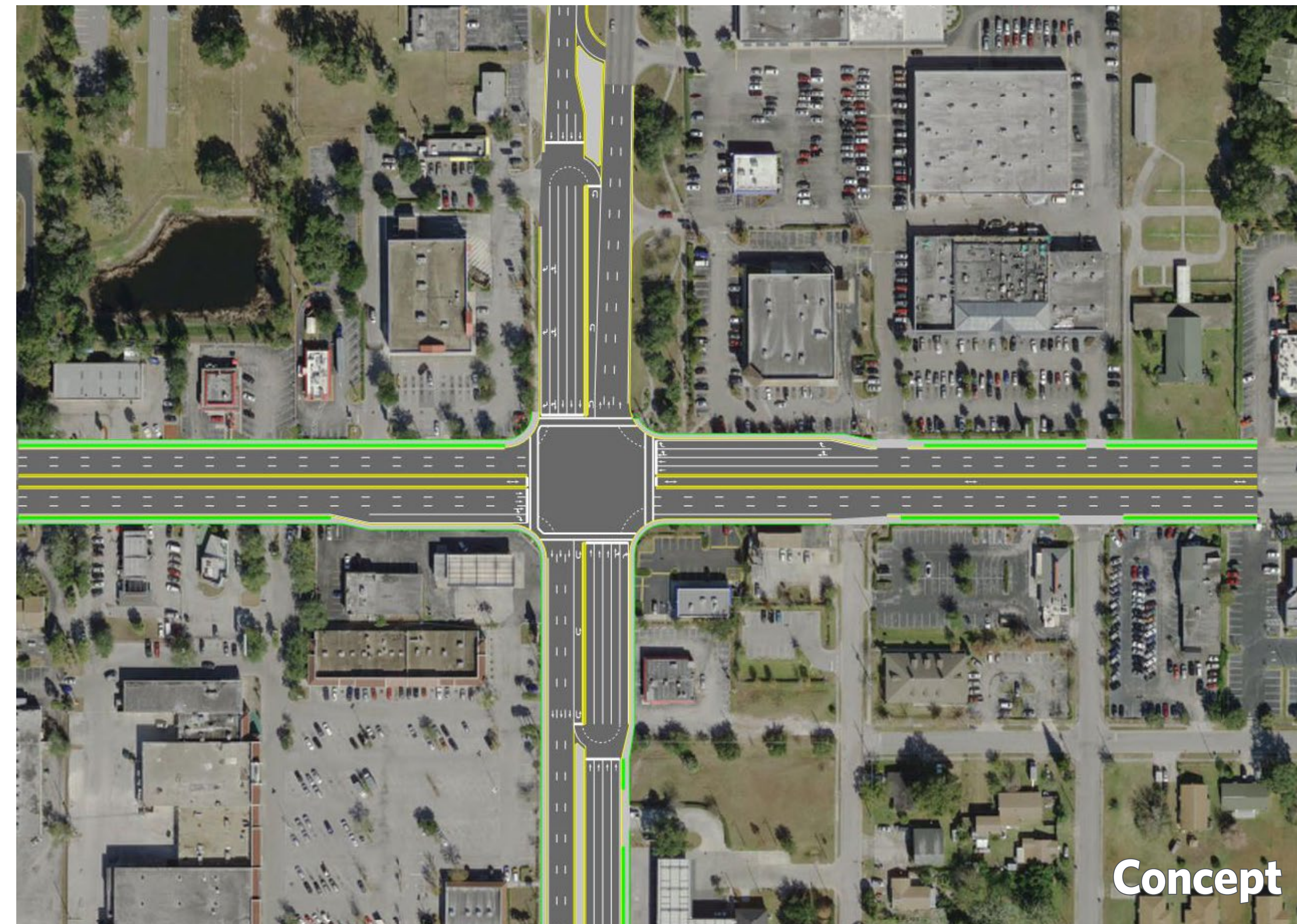


A CASE STUDY OF IMPROVING OPERATIONS FOR ALL USERS

The innovative approach to this study, the idea of fixing vehicular operations while allowing for BRT implementation is a reversal of the typical approach to BRT implementation. The median busway considered required the removal of a through lane in each direction in order to avoid a widening of the roadway which would incur significant right-of-way costs. The implementation of innovative intersection treatments along the corridor focused on concepts that preclude left turns from the main roadway as the space for left turn lanes would be absorbed by the median busway. The inclusion of innovative intersection concepts allowed the study to develop alternatives that significantly improves operations for vehicles, increases pedestrian crossing opportunities and crosswalk safety, while also providing for a median busway that will yield significant improvements to the efficiency of transit operations along this critical corridor.



Traditional BRT Layout



Concept



Concept