



Nope! That's within our Right-of-Way.



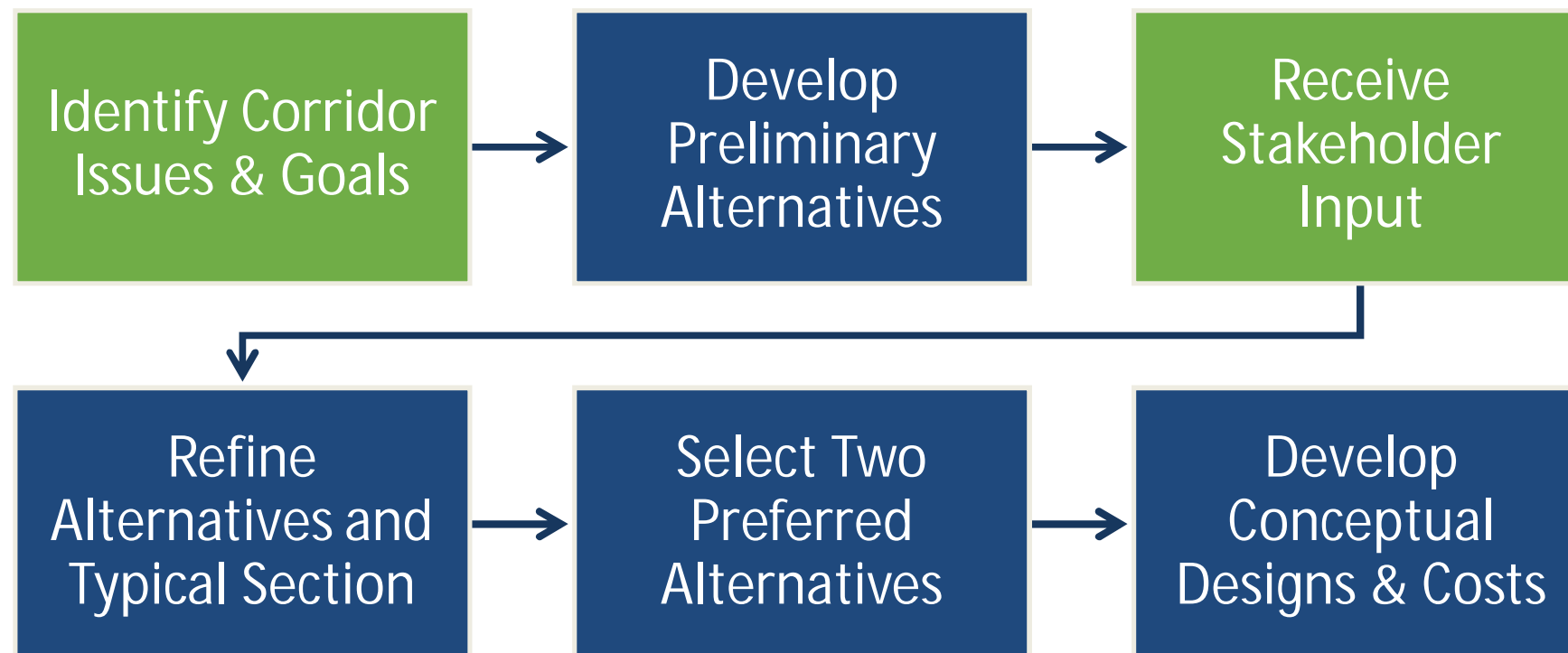
PARSONS
BRINCKERHOFF

NC 115 Feasibility Study

Richard Odynski, PE WSP | Parsons Brinckerhoff

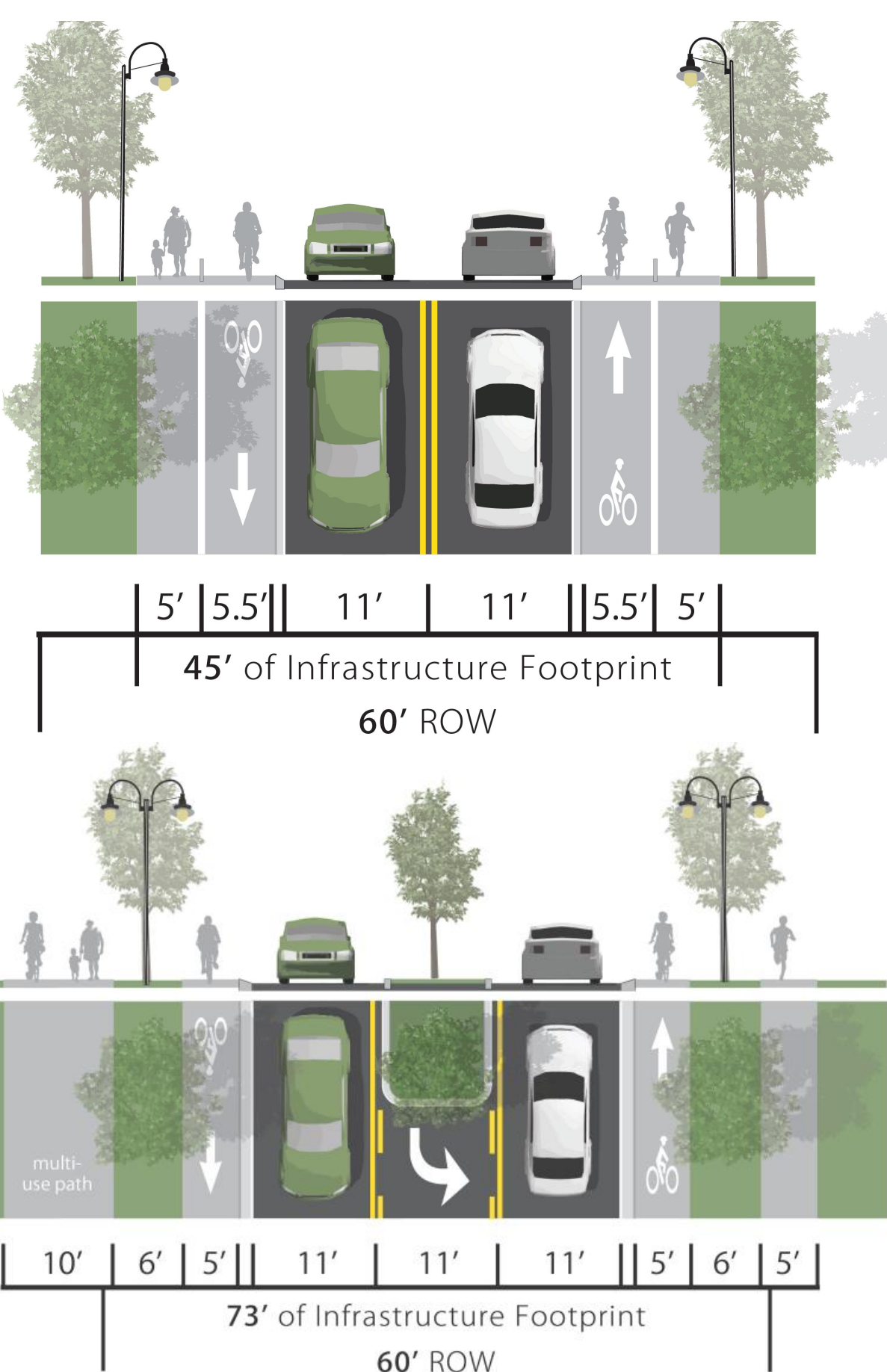


STUDY PROCESS



PROJECT ISSUES AND GOALS

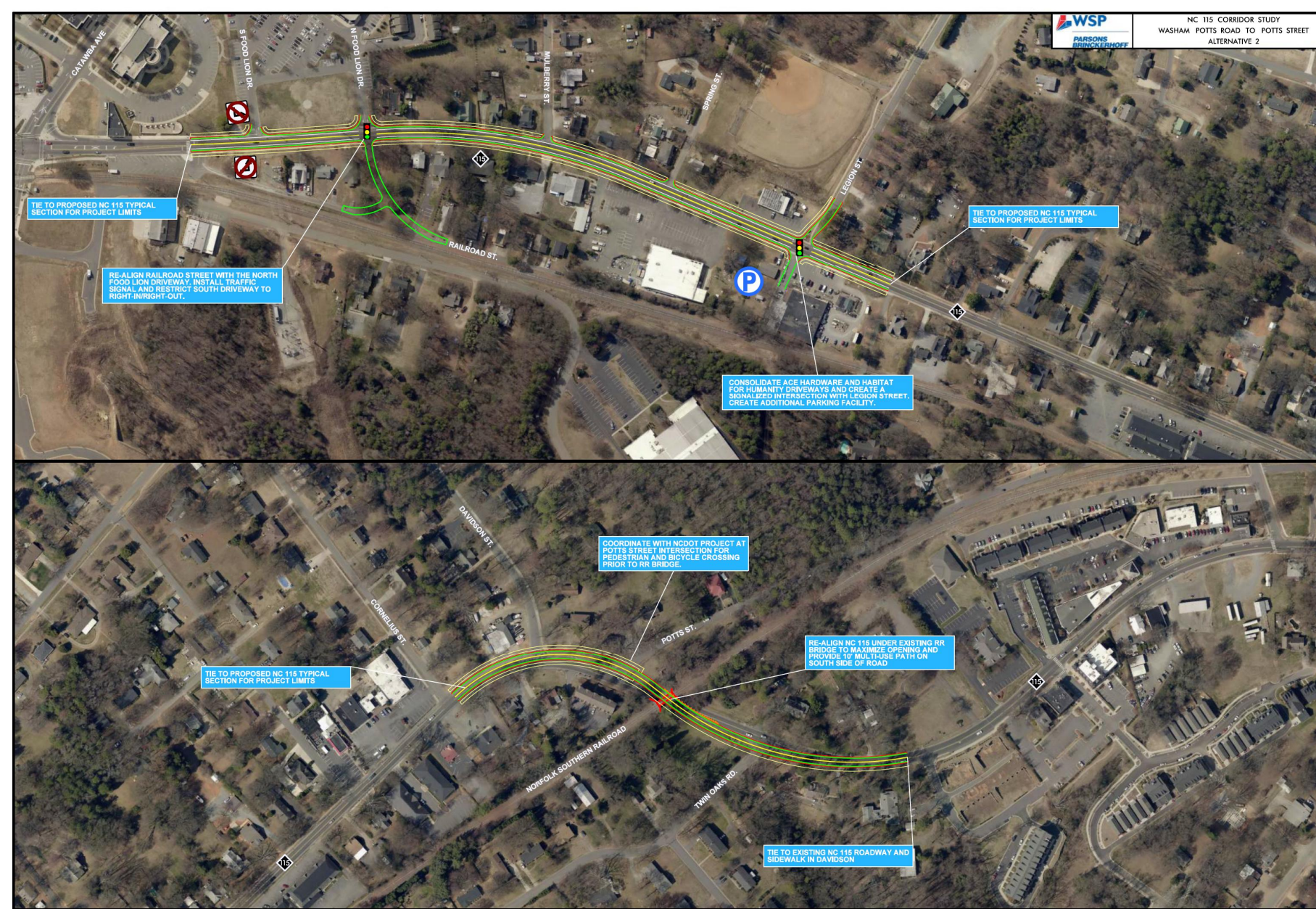
- Growth in Town and surrounding areas
- Town of Cornelius downtown
- NC 115 corridor already heavily congested
- Multiple agencies and stakeholders
- Proximity of residences and businesses
- Multiple driveways and intersections
- Lack of pedestrian and bicycle facilities



POTENTIAL IMPROVEMENT ALTERNATIVES

Spot Improvements

- Intersection improvements/Signalization
- Re-aligned roadway under NSRR bridge



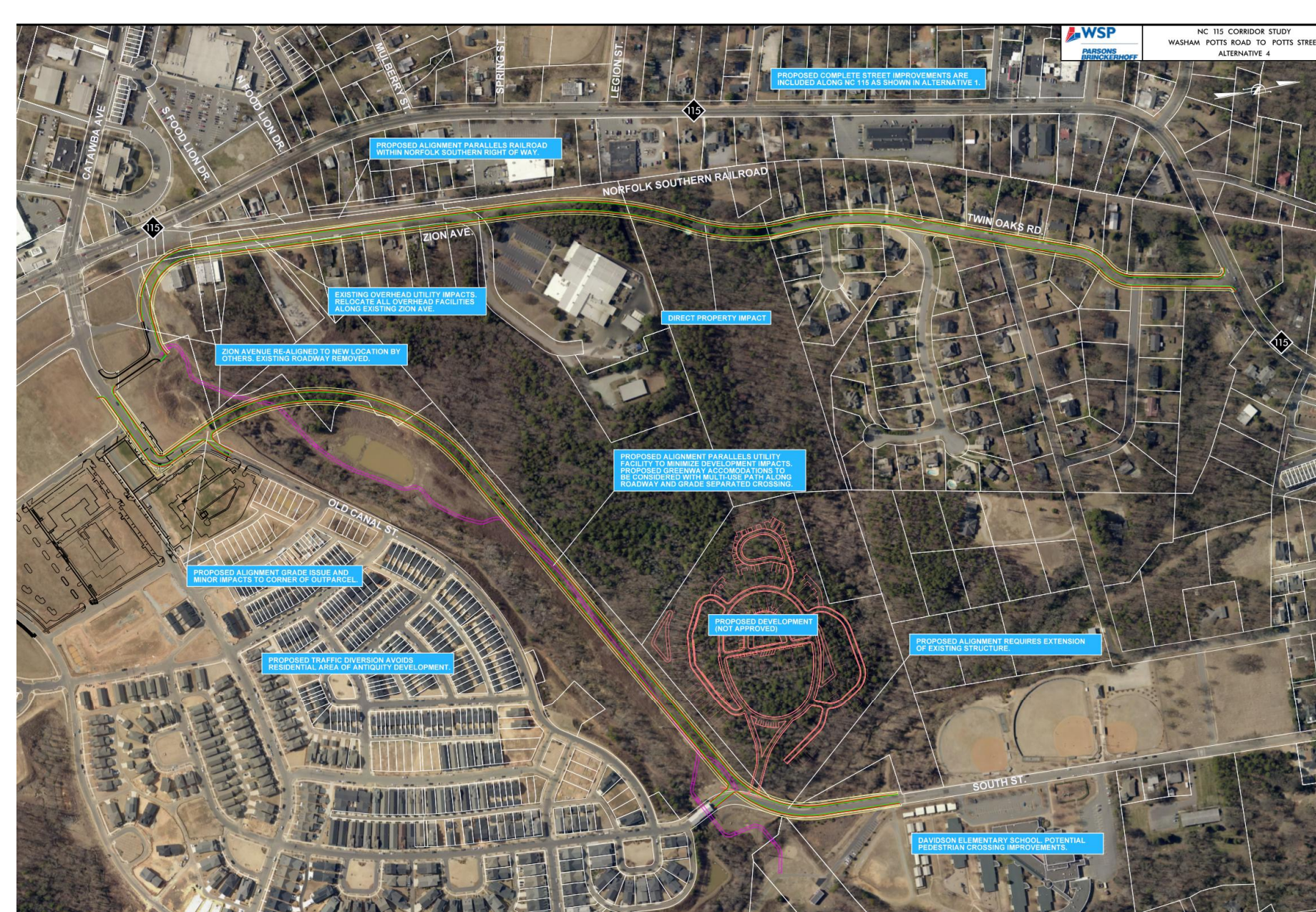
Quadrant Intersection

- Restricted left turning movements
- Improved pedestrian/bicycle safety



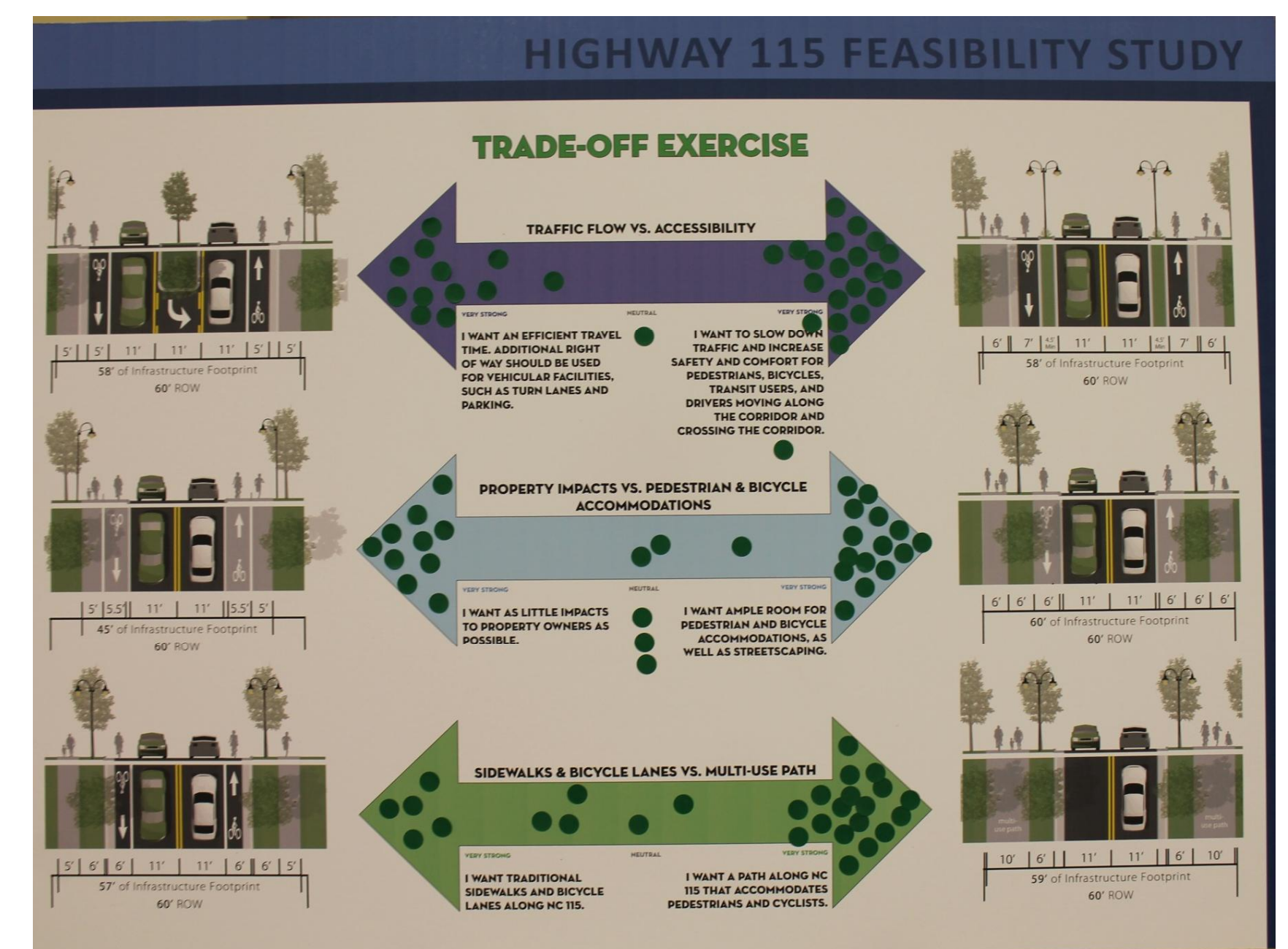
Additional Connectivity

- Parallel north-south route
- Reduce traffic volumes

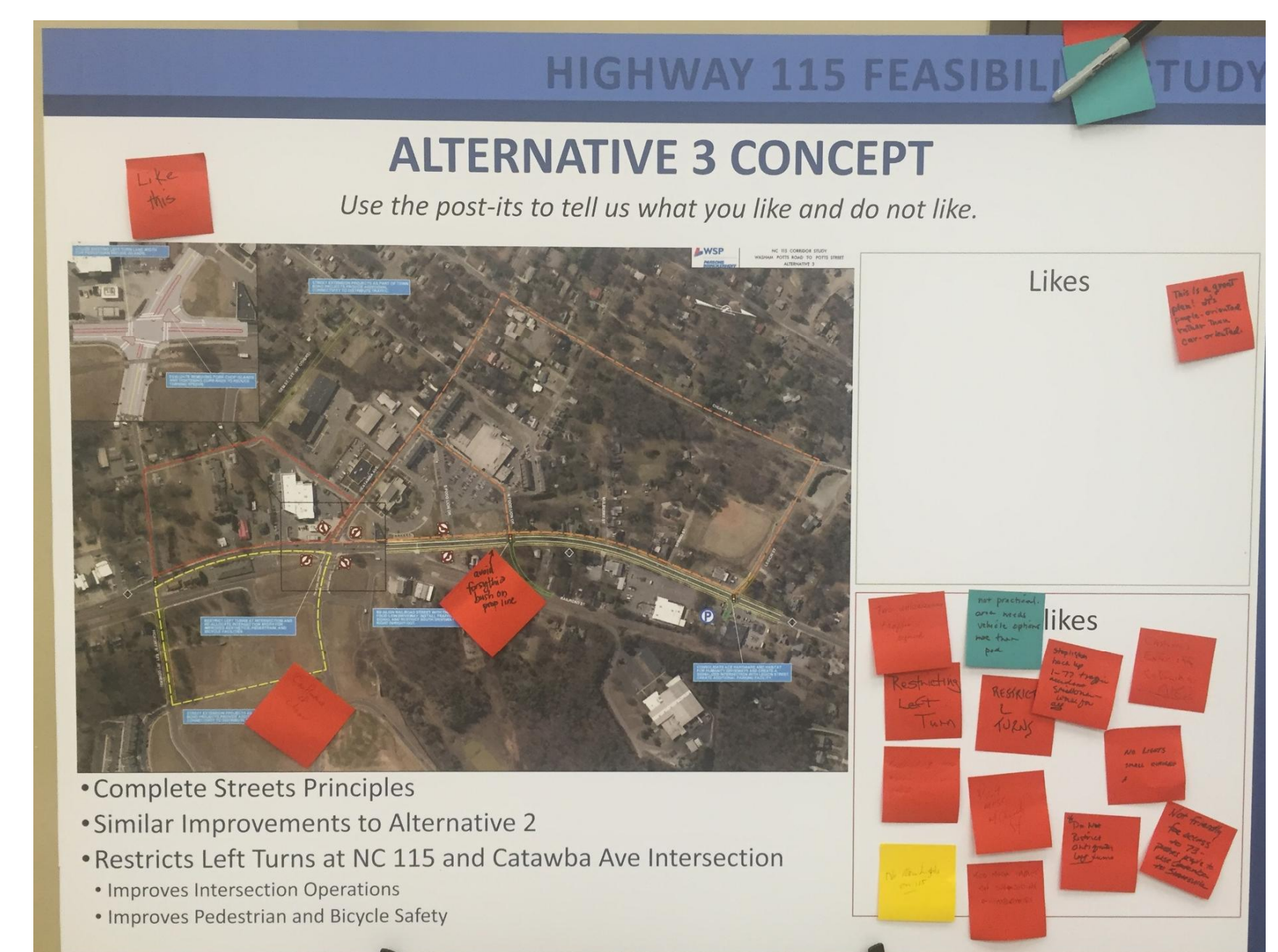


STAKEHOLDER INVOLVEMENT

Trade-Off Identification



Like/Dislike Comments



Acknowledgements

Town of Cornelius
Alta Planning & Design
Claire Brinkley, WSP | Parsons Brinckerhoff
Genevieve Rubrecht, WSP | Parsons Brinckerhoff
Google Earth™